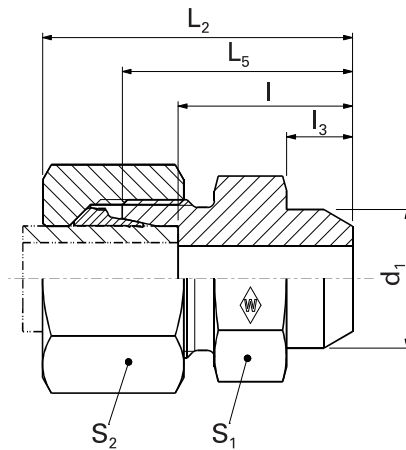


# Weld-on fittings

**P-ASV ...**

**P-ASV ... -1.4571**

E

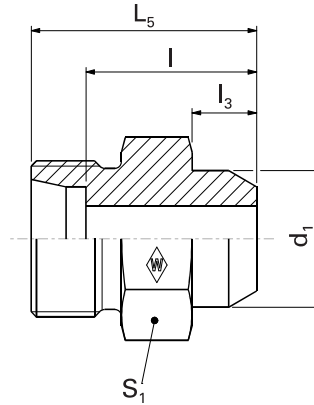


Series	PN bar (psi)	Tube outer diameter	Model	kg/100 pc.	$L_2$	$L_5$	$l$	$l_3$	$d_1$	$S_1$	$S_2$	WALPRO	WALPRO stainless steel	
												P-ASV ...	P-ASV ...-1.4571*	
													Art. no.	Art. no.
L	500 (7252)	6	<b>P-ASV 6 L</b>	2.5	29	21	14	7	10	12	14	<b>WAL373491</b>	<b>WAL620204</b>	
		8	<b>P-ASV 8 L</b>	3.6	31	23	16	8	12	14	17	<b>WAL373492</b>	<b>WAL620271</b>	
		10	<b>P-ASV 10 L</b>	4.7	33	25	18	8	14	17	19	<b>WAL373493</b>	<b>WAL620220</b>	
	400 (5801)	12	<b>P-ASV 12 L</b>	6.3	33	25	18	8	16	19	22	<b>WAL373494</b>	<b>WAL620221</b>	
		15	<b>P-ASV 15 L</b>	8.4	37	29	22	10	19	22	27	<b>WAL373495</b>	<b>WAL620222</b>	
		18	<b>P-ASV 18 L</b>	13.9	40	31	23.5	10	22	27	32	<b>WAL373496</b>	<b>WAL620178</b>	
		22	<b>P-ASV 22 L</b>	18.1	45	36	28.5	12	27	32	36	<b>WAL373497</b>	<b>WAL620208</b>	
	250 (3626)	28	<b>P-ASV 28 L</b>	30.2	47	38	30.5	12	32	41	41	<b>WAL373498</b>	<b>WAL620177</b>	
		35	<b>P-ASV 35 L</b>	37.7	54	43	32.5	14	40	46	50	<b>WAL373499</b>	<b>WAL620176</b>	
		42	<b>P-ASV 42 L</b>	64.1	58	46	35	16	46	55	60	<b>WAL373500</b>	<b>WAL620676</b>	
S	800 (11603)	6	<b>P-ASV 6 S</b>	3.2	34	26	19	7	11	14	17	<b>WAL373501</b>	<b>WAL620677</b>	
		8	<b>P-ASV 8 S</b>	4.9	36	28	21	8	13	17	19	<b>WAL373502</b>	<b>WAL620318</b>	
		10	<b>P-ASV 10 S</b>	7.2	39	30	22.5	8	15	19	22	<b>WAL373503</b>	<b>WAL620149</b>	
	630 (9137)	12	<b>P-ASV 12 S</b>	8.3	41	32	24.5	10	17	22	24	<b>WAL373504</b>	<b>WAL620231</b>	
		14	<b>P-ASV 14 S</b>	10.8	45	35	27	10	19	24	27	<b>WAL373505</b>	<b>WAL621459</b>	
		16	<b>P-ASV 16 S</b>	14.4	45	35	26.5	10	21	27	30	<b>WAL373506</b>	<b>WAL620411</b>	
	420 (6091)	20	<b>P-ASV 20 S</b>	21.8	51	40	29.5	12	26	32	36	<b>WAL373507</b>	<b>WAL620396</b>	
		25	<b>P-ASV 25 S</b>	37.7	56	44	32	12	31	41	46	<b>WAL373508</b>	<b>WAL620432</b>	
		30	<b>P-ASV 30 S</b>	44.9	62	49	35.5	14	36	46	50	<b>WAL373509</b>	<b>WAL620678</b>	
		38	<b>P-ASV 38 S</b>	68.4	69	54	38	16	44	55	60	<b>WAL373510</b>	<b>WAL620476</b>	

**⚠ Caution:** The pressure specifications refer to the steel version. For the stainless steel version (1.4571), please refer to the pressure specifications on page B5.  
 \*Complete stainless steel fittings (1.4571) with silver-plated nut (AG/AGP), see price list  
 $L_2$ = approximate dimension if the union nut is tightened

Special parts are available on request.

**ASS ...**  
**ASS ... -1.4571**



E

System nuts for supplementing the stud  
 (for technical data, see part D of this catalog)

Series	PN bar (psi)	Tube outer diameter	Model	kg/ 100 pc.	Stud	Stainless steel	WALRING	WALFORM	WALFORM	
					ASS ...	stud ASS ... -1.4571*	W-R ... VI	WF-M ... VI	stainless steel WF-M ... VI-1.4571*	
					Art. no.	Art. no.	Art. no.	Art. no.	Art. no.	
L	500 (7252)	6	ASS 6L	1.1	WAL037975	WAL061824	WAL624607	WAL625940	WAL625980	
		8	ASS 8 L	1.5	WAL037976	WAL066290	WAL624608	WAL625941	WAL625981	
		10	ASS 10 L	2.2	WAL037977	WAL024055	WAL624609	WAL625942	WAL625982	
	400 (5801)	12	ASS 12 L	2.5	WAL037978	WAL060719	WAL624610	WAL625943	WAL625983	
		15	ASS 15 L	4.3	WAL037979	WAL066291	WAL624611	WAL625944	WAL625984	
		18	ASS 18 L	6.6	WAL037980	WAL066292	WAL624612	WAL625945	WAL625985	
	250 (3626)	22	ASS 22 L	9.8	WAL037981	WAL066293	WAL624613	WAL625946	WAL625986	
		28	ASS 28 L	15.9	WAL037982	WAL066294	WAL624614	WAL625947	WAL625987	
		35	ASS 35 L	23	WAL037983	WAL066295	WAL624615	WAL625948	WAL625988	
		42	ASS 42 L	32.7	WAL037984	WAL066296	WAL624616	WAL625949	WAL625989	
	S	800 (11603)	6	ASS 6 S	2.1	WAL037985	WAL066297	WAL624617	WAL625950	WAL625990
			8	ASS 8 S	3.1	WAL037986	WAL066298	WAL624618	WAL625951	WAL625991
10			ASS 10 S	4.1	WAL037987	WAL061333	WAL624619	WAL625952	WAL625992	
630 (9137)		12	ASS 12 S	5.6	WAL037988	WAL066299	WAL624620	WAL625953	WAL625993	
		14	ASS 14 S	7.0	WAL037989	WAL066300				
		16	ASS 16 S	8.3	WAL037990	WAL066301	WAL624621	WAL625954	WAL625994	
420 (6091)		20	ASS 20 S	12.9	WAL037991	WAL066302	WAL624622	WAL625955	WAL625995	
		25	ASS 25 S	21.9	WAL037992	WAL066303	WAL624623	WAL625956	WAL625996	
		30	ASS 30 S	29.5	WAL037993	WAL066304	WAL624624	WAL625957	WAL625997	
		38	ASS 38 S	44.7	WAL037994	WAL066305	WAL624625	WAL625958	WAL625998	

**⚠ Caution:** The pressure specifications refer to the steel version. For the stainless steel version (1.4571), please refer to the pressure specifications on page B5.

Special parts are available on request.